



Community Foundations for **Lancashire** & **Merseyside**

A Year in Review: 2024/25

Welcome

It is a privilege to share with you the Community Foundations for Lancashire and Merseyside's Year in Review 2024/25.

This has been a year that reflects both the strength and the compassion of our communities.

We have distributed over £3.18 million in funding this year, through 632 grants to organisations and individuals who are driving change on the ground.

The challenges remain significant. As our Vital Signs research highlights, too many people face poverty, ill health, and inequality across Lancashire and Merseyside. Yet we know the solution lies in empowering local people and investing in grassroots organisations that understand their communities best.

None of this would be possible without the dedication of our donors, partners and trustees. Your generosity, expertise, and trust ensure that resources reach where they are most needed and that local giving continues to grow across our region.

As we look ahead, our commitment is unwavering: to invest in local communities, respond in times of crisis and work alongside those tackling issues at their roots.

Together, we are building stronger, fairer and more compassionate places to live.



David Wareing
Chair of the Board
CFLM



Rae Brooke
Chief Executive Officer
CFLM

Highlights from the year



Our long-standing partnership with **Jamie Carragher's 23 Foundation** reached a milestone 15 years of giving, with over £1.1 million distributed to date. To mark the occasion, we produced a six-minute video and social media reel featuring Jamie visiting local community groups.



The Care Leavers Project distributed £100k to young individuals to help their transition from care. **Blue Sky Foundation, Football for Change** and **Alan Knight Foundation** provided match funding to support the programme.



Marsden Building Society launched the **Business Deposit Affinity Savings Account**, which donates 0.25% of the total average balance to our Red Rose Responding Fund, supporting mental health and wellbeing initiatives in Lancashire.



Ram Gupta, Managing Director of **nybble.co.uk Ltd**, joined our Board of Trustees bringing a wealth of experience, having built a multi-award-winning IT company that delivers innovative services globally. His philosophy, which measures success beyond profit, aligns seamlessly with CFLM's mission to create positive and lasting change in local communities.

Lancashire's vital signs

Lancashire has a population of over 1.5 million people. A county of stark contrast, home to rural and metropolitan communities as well as local authorities at opposite ends of the deprivation rankings.



4.1%

Not in employment
(England: 4%)



21%

Have a disability
(England: 17%)



82.3

Crimes per
1,000 people
(England: 86.1)



18.9%

Households are
workless
(England: 13.9%)



25.7%

Children live in
low-income families
(England: 22.1%)



41.9

Average attainment
8 score (England: 46.2)



11.5%

Have no
qualifications
(England: 6.6%)



£660

Weekly median
full-time pay
(England: £732)



75.5

Years life expectancy
for males
(England: 79.1)



80.3

Years life expectancy
for females
(England: 83.1)



14.3

Per 100,000 deaths
by suicide
(England: 10.7)



57.9%

Adults are
physically active
(England: 67.4%)



69.5%

Adults are
overweight
(England: 64.5%)



23.9%

Year 6 children are
obese (England: 21%)

Statistics sourced from Office of
National Statistics & Department
of Health 2025

Merseyside's vital signs

Merseyside has a population of over 1.5 million people. Shaped by its maritime history, working class communities and ongoing regeneration. While some areas enjoy prosperity, others less than a stone's throw away continue to experience long-term challenges.



4.4%

Not in employment
(England: 4%)



22%

Have a disability
(England: 17%)



92.7

Crimes per
1,000 people
(England: 86.1)



19.5%

Households are
workless
(England: 13.9%)



26%

Children live in
low-income families
(England: 22.1%)



41.9

Average attainment
8 score (England: 46.2)



9%

Have no
qualifications
(England: 6.6%)



£685

Weekly median
full-time pay
(England: £732)



75.5

Years life expectancy
for males
(England: 79.1)



80.6

Years life expectancy
for females
(England: 83.1)



13.8

Per 100,000 deaths
by suicide
(England: 10.7)



62.7%

Adults are
physically active
(England: 67.4%)



68.4%

Adults are
overweight
(England: 64.5%)



26.3%

Year 6 children are
obese (England: 21%)

Statistics sourced from Office of
National Statistics & Department
of Health 2025

2024/25 in figures



£3.18

Million distributed



632

Grants



223

Individuals



409

Organisations



48%

Success rate of
eligible applicants



£5,034

Average grant

Investing in community

Our aim is to drive as much investment into Lancashire and Merseyside as we can to enrich the lives of people in those areas, who are most in need and to grow stronger communities together.

This year, seven new funds were created:



**1892
FOUNDATION**

MHA 1892
Foundation



The Mayor's Fund
Halton Foundation



Youth Empowerment
Scheme (YES) Fund

**Alan Knight
Foundation**

**Liverpool CC Staff
Fundraiser for Our
City's Food Banks**

**Preston City Council Adult
Social Care Prevention &
Early Intervention**

**Liverpool Care
Leavers**

Community investment: Evolving Mindset

Born from lived experience, Evolving Mindset was created by brothers Phil and Andy Noon, to bridge the gap between overstretched GP services and specialist mental health care.

Kirsty said: “In 2019, I became an amputee, and that changed everything. I isolated myself in a wheelchair. In 2020, lockdown started. I was caring for an elderly family member, and I was struggling with my mental health. I saw an Evolving Mindset post shared in a Facebook group and signed up for the seven-week online well-being course. Each week built on the last and it made a huge impact.

Before Evolving Mindset, I was a primary school teacher, but afterwards I realised I wanted to support adults with mental health issues, not return to teaching. So, I retrained as a counsellor and joined the Evolving Mindset team.

Now, I support the YES Fund Women’s Group on Thursdays and facilitate the Zoom sessions. I love walking alongside people who come in vulnerable and watching them open up after hearing my story. It makes a real difference.

Just last week, I gave a talk to 265 kids at Anfield Stadium. Five years ago, that never would’ve happened.”



Knowsley

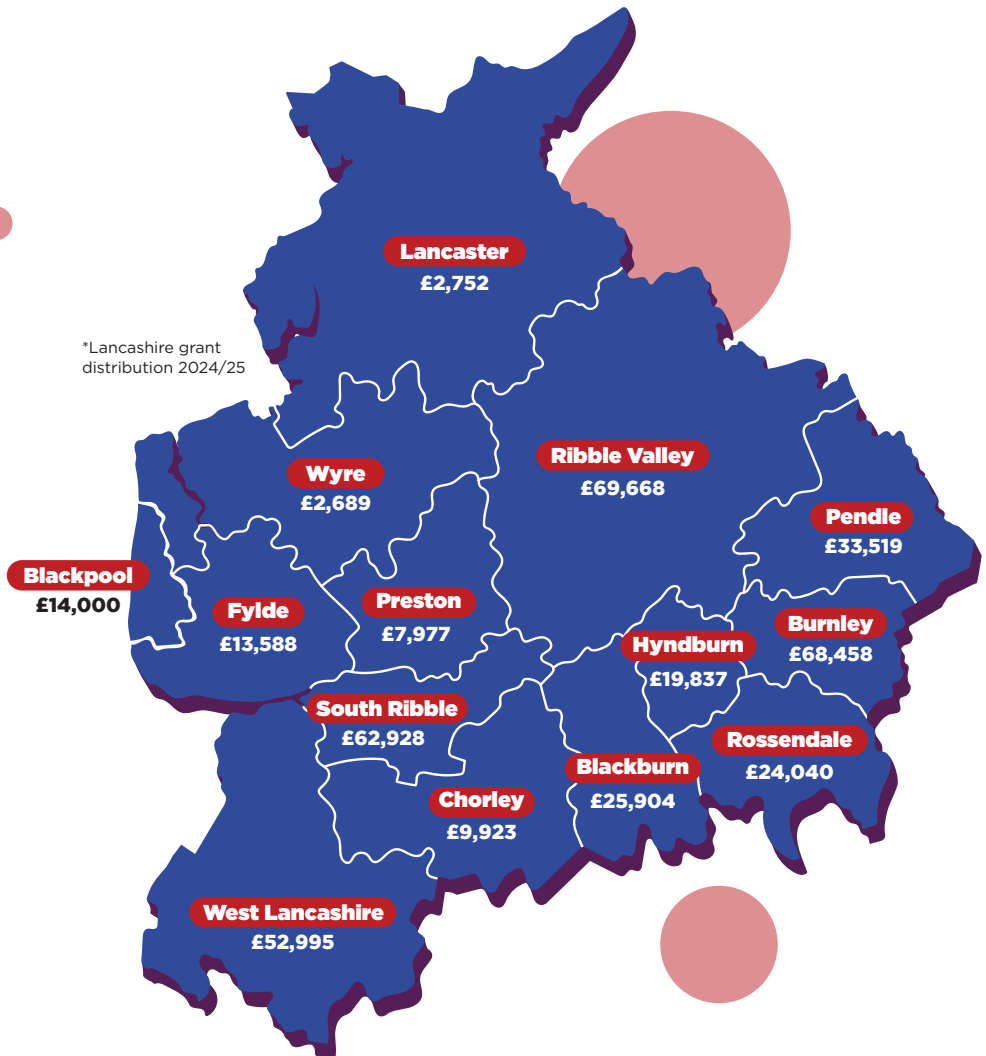
Awarded

£149,000

Funded by



Lancashire distribution



To find out more
about CFL impact visit:
www.lancsfoundation.org.uk

Community investment: Team Rise

Team Rise supports adults with learning disabilities, autism, and those who are vulnerable, lonely, or socially isolated, in one of the most deprived areas of the country with one of the highest rates of disability.

Emma said: “I’ve got autism and cerebral palsy, so coming to places like Team Rise has been incredible. I’ve been coming to Team Rise for about 6-7 years.

Before I knew I had autism, I struggled socially and didn’t have many friends. Coming to Team Rise helped me connect with people like me. The friends I’ve made here are the longest-lasting friends I’ve ever had.

I even hosted a few lessons on Marvel, which I thought people might be bored by, but they were interested and even encouraged me to present more. Because I’ve known the people here for so long, I felt confident. Talking about things I love allowed me to engage and share my knowledge.”



Pendle

Awarded

£20,589

Funded by

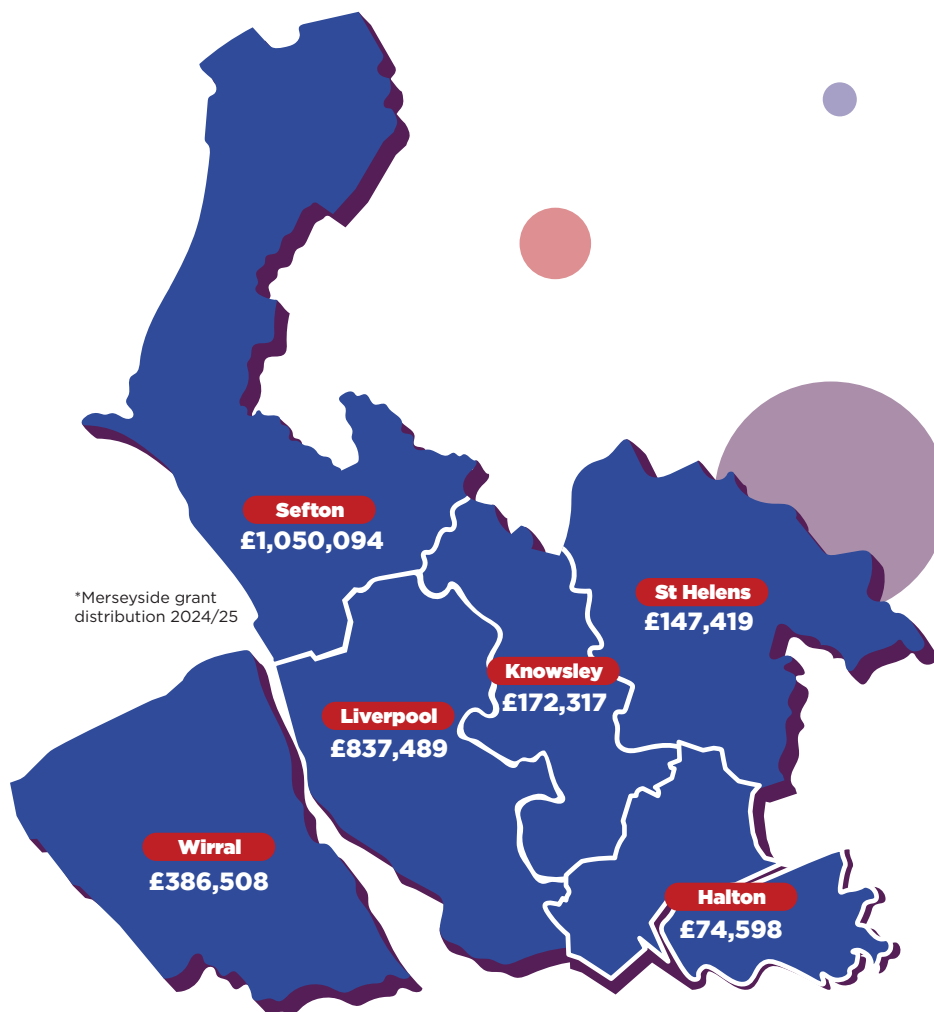
Christal
FOUNDATION



ACE Lets Create
Jubilee Fund



Merseyside distribution



To find out more
about CFM impact visit:
www.cfmerseyside.org.uk

Community investment: Sahir House

Founded at the height of the HIV/AIDS epidemic in 1985, Sahir House has provided support to people living with HIV for four decades. Today, the organisation stands as a beacon for the region's LGBTQIA+ communities.

Kat said: “We’re seeing a tenfold demand on our services, and it’s heartbreaking knowing we can’t always meet it. The human inside you wants to do everything, but without capacity, we risk losing who we are. We’d love to offer more, but that’s the saddest part: the need is there, but the resources aren’t.

Still, we keep going. Whether it’s our asylum support, our gender-diverse and trans support through Gender Proud, or projects like Queer Town Hall and Access Pride, everything is rooted in the needs of the community.

We don’t look to just deliver services, we want to create family, belonging, and visibility. And for many people, especially those seeking asylum, that’s life changing.”



Liverpool

Awarded

£15,966

Funded by



Communities and causes

We help individuals and organisations give to causes which matter to them, where there is most need and where it will have greatest impact.

The work we do aligns to the United Nation's Sustainable Development Goals (SDGs) – driving charitable giving across communities for transformative and sustainable change.



£1,583,609
307 grants

Health, Wellbeing
& Safety



£122,292
22 grants

Arts, Culture &
Heritage



£705,587
150 grants

Skills, Education &
Employability



£365,338
62 grants
Strengthen
Community Cohesion



£218,760
83 grants
Reduce Disadvantage &
Improve Access to Services



£186,064
8 grants
Environment &
Green Spaces

Community investment: Dig In

Dig In, a veteran-led mental health charity quietly making a profound impact from within the protective walls of a hidden garden.

Service users can take part in growing food, crafting woodwork, learning new skills, or simply enjoying tea and conversation alongside others who truly understand them.

Bob said: “I originally got involved with Dig In after a breakdown which saw me admitted to hospital. I came out and I was having therapy, and the therapist mentioned that there’s a place called Dig In that was doing a woodworking course. So, I was dragged here by my wife and that’s it. I’ve been here 11 years, and it has just changed my world.

Twelve years ago, I was a mess. I was on the verge of taking my own life and I couldn’t see a future. I wasn’t in a very good place at all. I wouldn’t go out of the house or anything. But coming here, the friendliness, the camaraderie, the work, it just opened another door for me.

Dig In brings into my life a purpose. A purpose to get up in the morning. Purpose to come into work. A purpose to help people. And a purpose to look after myself as well.”



Preston

Awarded

£44,500

Funded by



**Lancashire Responding COVID19
Community Support Fund**

**CFLM Cost of Living
Support Fund**



Communities in crisis

On 29th July 2024, our community faced an unimaginable tragedy when a knife attack at a children's dance class in Southport claimed the lives of three young girls: Alice da Silva Aguiar, Elsie Dot Stancombe, and Bebe King. Many others were injured and witnessed the horrific events. What followed was an extraordinary outpouring of grief, solidarity, generosity, and resilience from a community shocked to its core.

The Southport Strong Together Appeal, launched in partnership with Sefton CVS and Sefton Council, was our collective response. In the six months that followed, more than £850,000 was raised through Southport Strong Together, the Swifties Fundraiser for Alder Hey Children's Charity, and the Southport Dance Group Emergency Fund—thanks to the compassion of local, regional, national and international communities and organisations.

Within 24 hours, experts in emergency response and fundraising convened—including the National Emergencies Trust (NET), the Fundraising Regulator, JustGiving, GoFundMe, and Merseyside Police—to provide a trusted, transparent route for donations and to ensure funds were managed and distributed swiftly and responsibly CFLM were central to this process.

This was not the first time we have stepped forward in crisis. Our approach to emergency funding is tried, tested, and effective: we raised and distributed £1 million in response to the Lancashire floods in 2015, and more than £5 million during the COVID-19 pandemic.





Parenting 2000



Home Start
Southport & Formby

The Southport Strong Together Appeal, led by the Community Foundation for Lancashire and Merseyside (CFLM) in partnership with local authorities and charities, provided vital and rapid support to the families and wider community affected by the Southport tragedy. The National Emergencies Trust was proud to assist by raising awareness, advising on fund distribution, and connecting key stakeholders.

Responding to emergencies of any scale requires a collective effort, bringing together diverse skills, resources, and expertise that no single organisation can provide alone. The collaboration between CFLM, regulatory bodies, the Trust, and giving platforms was nothing short of remarkable. Everyone worked collaboratively to prioritise the needs of those affected, ensuring help was delivered swiftly and compassionately.

Working with Rae and her team was an absolute pleasure. Their professionalism, clear communication, and mutual trust ensured a seamless response. Their drive and passion to go above and beyond to support their local community in its time of need was truly inspiring. It was a privilege to be part of such a unified effort, helping to deliver essential support to those impacted when it was needed most.



Mhairi Sharp

CEO, National Emergencies Trust

Targeting issues at their roots

There are nearly 200,000 registered Third Sector Organisations (TSOs) in England and Wales.

Yet resources are unevenly distributed. Just 5% of organisations, those with incomes between £1 million and £25 million, control more than 70% of sector finance. Meanwhile, the micro and small organisations that make up over 70% of the sector share only 3% of income.

These small charities are the quiet powerhouses of our communities. Operating on less than £1 million a year, they are often first to respond to crisis, are deeply embedded in local life and trusted by those they serve.

Led by people from the communities they support, small charities bring cultural insight, lasting relationships, and an intimate understanding of local challenges.

As a leading regional funder specialising in local giving, we focus on bridging that gap. Last year: 93% of our funding went to organisations with income under £1 million.

By directing resources where they are most needed, we ensure grassroots organisations can continue tackling issues at their roots.

Grants made by income:

12%

Less than £10k

20%

£10-50k

12%

£50-100k

30%

£100-250k

15%

£250-500k

5%

£500k-1m

7%

Over £1m

*% rounded to closest full number

Community investment: Sean's Place

Founded by Debbie Rogers in memory of her brother Sean, the service began with a single grant from the Community Foundation and has since grown into a vital support hub for men facing isolation, depression and crisis.

Callum said: “I’ve been coming to Sean’s Place on and off for about three years. The first time I came, I broke down in tears. I’d always believed men don’t cry, so it hit me hard.

When I first started counselling here, I was at rock bottom. Talking to someone who wasn’t a family member helped massively. I didn’t want to burden loved ones, but I also didn’t see a way out. I don’t have those thoughts anymore. This place has helped.

It’s grown so much. There’s something on every day for all ages. When I’m here, I forget what’s going on in my head. Everyone’s laughing and joking. You’d walk in and think it was a social club, not a mental health service. That’s what makes it a great escape.”



Sefton

Awarded

£40,000

Funded by



LCR Cares COVID19 Support Fund



How to partner with us?

Our experienced team have the expertise to help you make informed decisions around charitable giving, whilst ensuring your investment makes a difference to those who need it most.

We connect our clients to grass roots community groups who are seeking funding, offering bespoke advice, combined with a full support service, which ensures sound management and due diligence, making giving easy, tax-efficient and robust.

All you need to do is get in touch and talk to one of our team, we can walk you through the rest.

● **Personal Giving**

We work with many families and individuals who are passionate about charitable giving and want to make a difference. We have the expertise to ensure your charitable giving requirements are met, helping those causes closest to your heart.

● **Corporate Giving**

We provide bespoke support, helping you to develop and deliver the social element of your ESG strategy. Wherever you are on your planning cycle, we are there to provide expertise and guidance at every stage, ensuring you can evidence the impact you make.

● **Professional Advisers**

We work in partnership with you to ensure your clients have the expertise they need to make informed charitable investment decisions as part of their financial planning. Every client is different, so we look to provide a package bespoke to their needs.

● **Public Sector Funds**

Our experience of managing funds on behalf of the public sector is unsurpassed. We offer bespoke advice and expertise, combined with a professional support service.

● **Trust Transfers & National Charities**

We have experience of revitalising dormant or underutilised trusts and supporting large charities to manage their funds, where reaching grass roots community groups is crucial, timing is of the essence and due diligence a prerequisite.

Some months after my wife's death, I suggested to my financial planner at FPC I would like to set up some form of Charitable Foundation with the aim of helping small startup charities in the Burnley area, from where Chris, my wife, and I originated from, met and got married.

I wanted this to commence on the first anniversary of my wife's death. FPC set up a meeting with Rae and Karen at CFLM, as Moira O'Shaughnessy (Managing Partner at FPC) suggested it would be a better and more efficient way of operating the Foundation, rather than undertaking all the future administration myself.

We eventually met, and I was instantly impressed with their presentation, giving me many details of how the Foundation would operate, including visits to analyse projects, their suitability for being issued a grant, presenting potential bidders each year to our panel and advising with their extensive knowledge.

Our panel consists of my daughter, son, Moira, two representatives from CFLM and myself. It has been wonderful to involve my children right from the beginning.

Each year, we are presented with the current valuation of the fund after making the various donations, and we have been delighted that the capital in the fund has hardly reduced.

At the end of 5 years, CFLM presented a full colour brochure of the performance of the Foundation, including how much we had donated, how many organisations had benefited and an estimate of how many individuals and their families had been impacted.

The whole ongoing process has been incredibly gratifying from a personal viewpoint, knowing how many disabled and under privileged people we have helped, and will continue to help for many years to come. Also to know my children are involved and will continue to be so, and hopefully one or more of my grandchildren will eventually become involved.

Allan Webster

Founder of Christal Foundation

Thank you to all our donors

**MJ Bibby
Fund**



**Southport Strong
Together Appeal**

**BIBAs
Foundation**

**Know Your
Neighbourhood
(KYN)**

RWE

**Merseyside
Community
Investment
Fund**



**SMBC
Taylor
Fund**

FredMill

**Alfred Shaw
Trust Fund**



**The LF
Foundation**



**Leahy
Foundation**

**Rossendalealiye
BOROUGH COUNCIL**

**Mayoral DJ
Battle Event**



**Lancaster
Community
Fund**



**Big Local
Beechwood,
Ballantyne and
Bidston**



**Preston New Road
Community Benefit
Fund**

John laing
making infrastructure happen

**Ann and Ray
Messer
Foundation**



**Louise Rossiter
Foundation**



**Red Rose
Responding
Fund**



**Care Leavers
Project
2024-2027**



**Sefton
Education &
Learning
Fund**

**MERSEYSIDE
WOMEN'S FUND**
#TogetherForWomen

**Sefton MBC
Educational
Trust Fund**

**Alan Knight
Foundation**

**The Windle
United Fund**



**St Christopher's
Trust**



**Liverpool CC
Staff Fundraiser
for Our City's
Food Banks**



**Lancaster
Foundation**



**New Progress
Housing**

**Preston City Council Adult
Social Care Prevention and
Early Intervention Fund**

**Roy & Louise
Rossiter**

**LANCASHIRE
WOMEN'S FUND**
TOGETHER FOR WOMEN

**Joseph
Harley Fund**

HILL DICKINSON



*All listed funds distributed funding in the financial year 2024/25.

The benefits of working with the Community Foundation are their sheer knowledge and expertise, far superior to anything that we would have within our own organisation. Building fundamental relationships over a very extensive network across the Liverpool City Region, helping us ensure that we reach the people that need our help the most.

Liverpool ONE Foundation exists primarily to support young people with their mental well-being and health. We've seen a huge increase in the number of community groups and charities that require our help, but Community Foundations's ability to help us navigate the number of applications and requests has been critical to the success of the foundation.

The knowledge, the expertise and the professionalism of the team at the Community Foundation has been fantastic. We could not have achieved what we have since the fund began in 2009, if it hadn't been for the people behind the service.

The team are very passionate about the cause, and they've helped us to support a huge number of organisations across Halton, St. Helens, Sefton, Liverpool, Wirral and Knowsley. We just couldn't have delivered that in house without their support.



Donna Howitt
Place Strategy Director
Liverpool ONE

Supporters & trustees

A network of high profile individuals, community leaders and local businesses support the work of CFLM, raising our profile within the private sector and ensuring we stay connected to the issues on the ground.

Patron



Cherie Blair CBE, KC

Presidents



Mark Blundell
Lord-Lieutenant of
Merseyside



Amanda Parker
Lord-Lieutenant of
Lancashire

Ambassadors



Edwin Booth CBE DL
Executive Chairman of
EH Booth & Company Ltd



Marc McLoughlin
CEO of Orca Finance



Ram Gupta
CEO of Nybble IT

Lancashire Investors in Community

Launched in 2020, Lancashire Investors in Community is a dynamic initiative that brings together purpose-driven local businesses committed to creating lasting change in Lancashire.

Our members share a common belief; by working collectively, we can make a meaningful difference in the lives of people within our communities.

Members

BOOTH'S
FOOD, WINE AND GROCERY

Bigtank

BROWSHOLME

PM+M

TPFinancialSolutions

Male Allies UK

EnviroSystems
Innovating for Agriculture

Financial Affairs

Workhouse
Creative Marketing

marsden
BUILDING SOCIETY

HD
harrison drury solicitors
we make it possible

FORT VALE

JAMES HALL & CO
— ESTD 1863 —

nybble

mha

ORCA
Killer finance for growing businesses

NORI
HR & EMPLOYMENT LAW

wepa

seriun

The Business Network
Central & East Lancashire

University of Lancashire

CKS
CATERING EQUIPMENT

PORSCHE
Porsche Centre
Preston

Guide Security
CCTV • Access Control • Intruder • Monitoring • Fire
part of **senseco**

senseco
Fire • Sprinklers • Suppression • Security

BAE SYSTEMS

AQUALEASE
PROVIDING HASSLE FREE AQUARIUMS SINCE 2003

To find out more about
CFL and LiC impact visit:
www.lancsfoundation.org.uk

Lancashire Investors
in Community

Our trustees

Trustees play an essential role in the charitable sector. In the UK, there are more than 950,000 registered trustees, often senior professionals, well-connected leaders, or individuals with unique insights into community needs. Without their leadership and dedication, the charitable sector could not exist.



David Wareing
Chair of the Board
Retired Senior Partner Hill Dickinson LLP



Ruj Dev
Treasurer
Chief Financial Officer of Mills & Reeve



Andy Myers
Trustee
Retired Regional Development Manager National Lottery Community Fund



Donna Howitt
Trustee
Place Strategy Director of Liverpool ONE



Naz Zaman
Trustee
CEO of Lancashire BME Network



Neil Welsh
Trustee
Financial Planner at PM+M



Sarah Pickerill
Trustee
Head of People at Carpenters Group

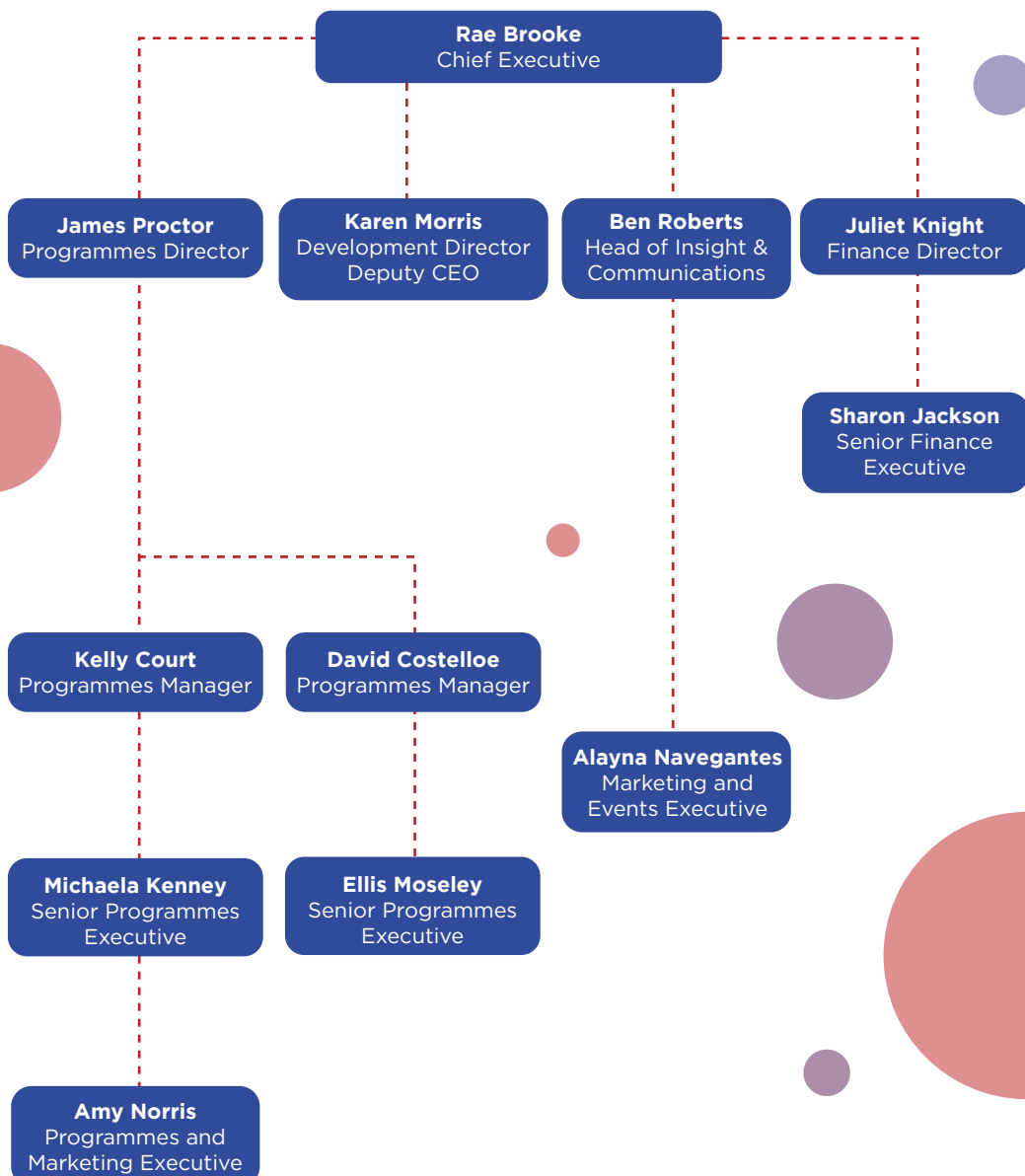


Ram Gupta
Trustee
CEO of Nybble IT Solutions



Philip Rooney
Trustee
Retired Liverpool Office Managing Partner DLA Piper

Our team



To find out more about our team visit:
www.lancsfoundation.org.uk or
www.cfmerseyside.org.uk



Rae Brooke

CEO

M: 07515 328 162

E: rae.brooke@cfm.org.uk



Karen Morris

Development Director & Deputy CEO

M: 07973 409 858

E: karen.morris@cfm.org.uk

**The Community Foundations for
Lancashire and Merseyside**

www.lancsfoundation.org.uk

www.cfmerseyside.org.uk

Registered company number: 342220

Registered charity number: 1068887

